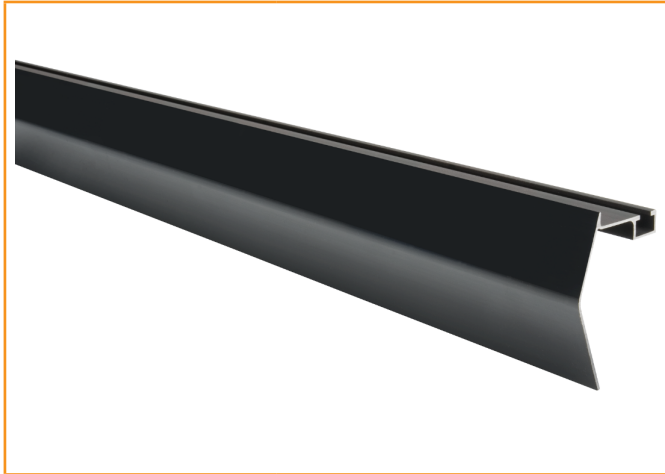
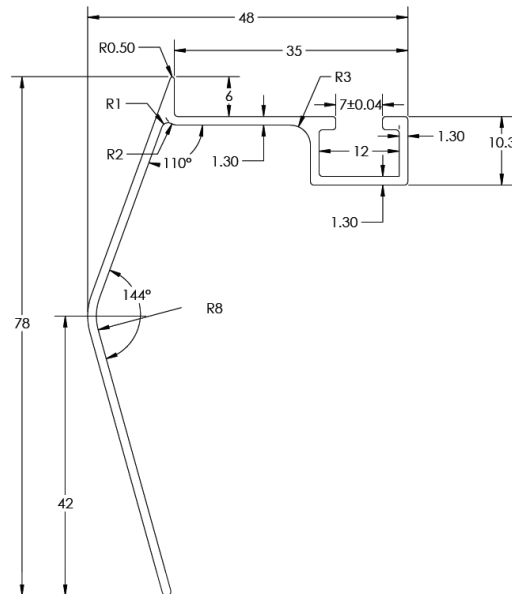


SKIRT



| Part # | Description |
|----------|-------------|
| GR-SKIRT | Skirt |



Features:

- Weight: 0.513 kg/m, 0.344 lb/ft
- Material: Aluminum alloy 3xxx



SKIRT

Installation Overview



- Position skirt on panel.
- Tighten the Skirt on panel for 65 in-lbs.

