

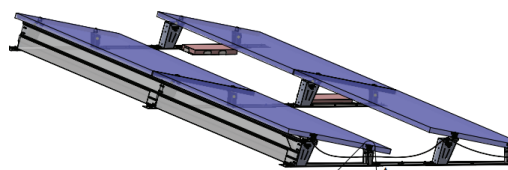
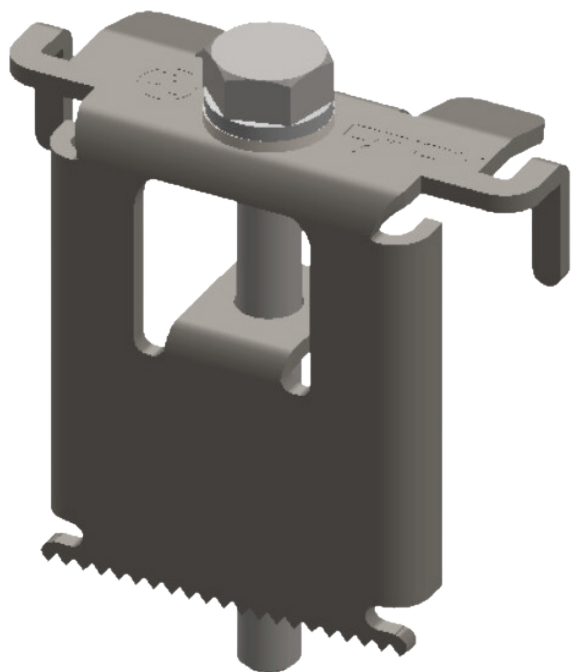
# Grounding End Short Clamp

Connects end of the solar panels to the brackets and also have integrated grounding from both modules to the brackets.

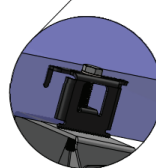


Secure solar panels and create strong ground conductivity path

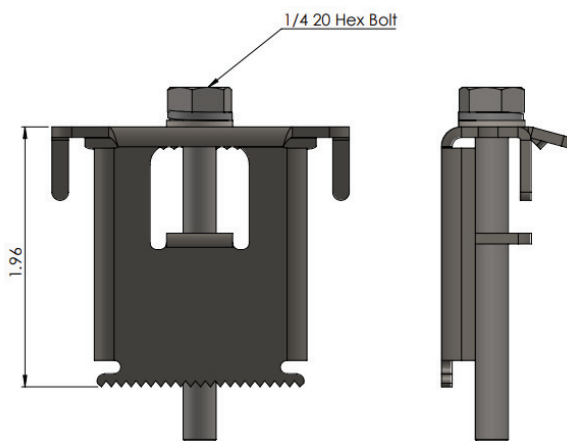
Part No.: **GR-R-STD-170-BLK**  
Weight (lbs): **0.07**  
Dim (in): **1.9 x 0.75 x 0.05**  
Materials Used: **AL 5052-H32**



A



DETAIL A



QRC CODE  
HERE