

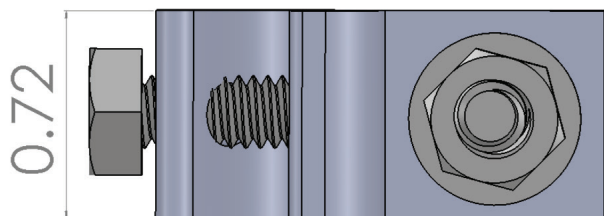
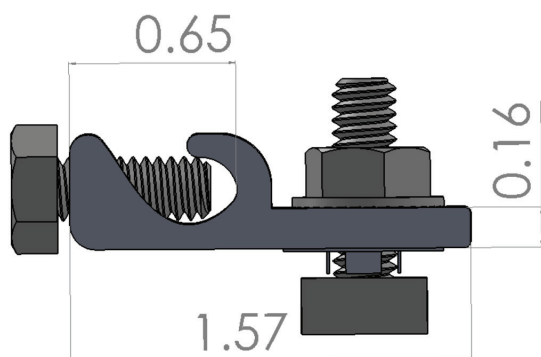
Rail Ground Lug

Used to connect ground wire to key grounding points throughout the GripRail System.



Connects ground wire to key grounding points throughout the GripRail System.

Part No.: **GR-G-RGL-ST**
Weight (lbs): **0.1275**
Dim (in): **1.57 x 0.72 x 0.45**
Materials Used: **300 Series Stainless Steel**



QRC CODE
HERE