

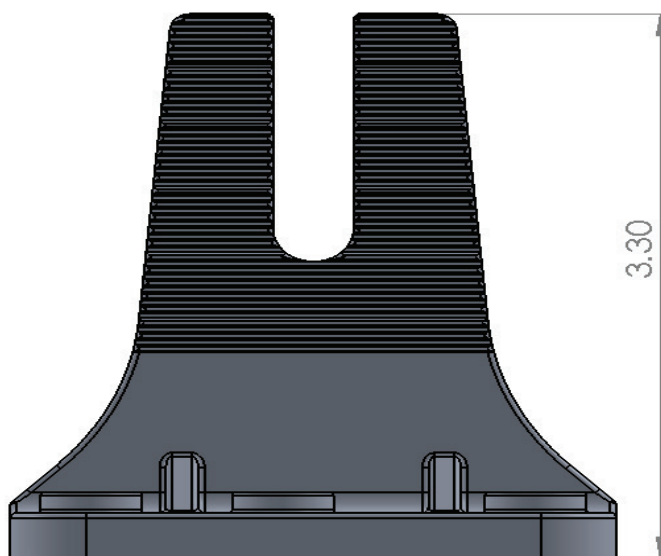
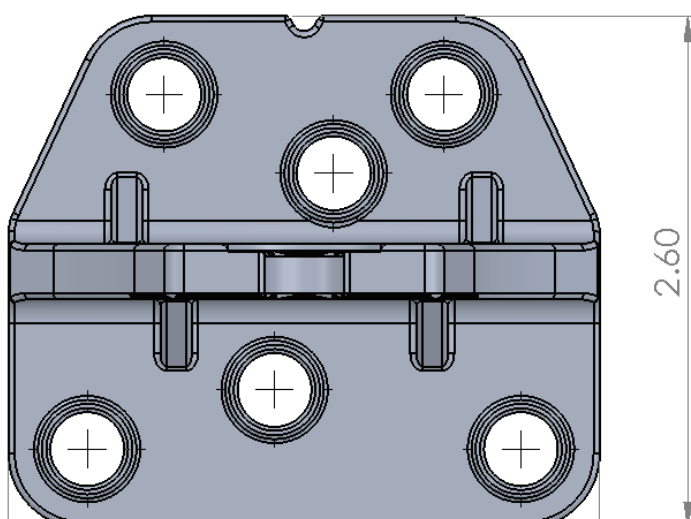
# Quick Grip

Our Quick Grip respects the roof with a cast-aluminum barrier encasing an industrial-grade foam-and-mastic seal, accelerating installation and ensuring top waterproofing protection.



Quick Grip with full waterproof protection

Part No.: **GR-QUICKGRIP**  
Weight (lbs): **0.32**  
Dim (in): **3 x 2.60 x 3.30**  
Materials Used: **6063 T6 Aluminum**  
**300 Series Stainless Steel**



QRC CODE  
HERE