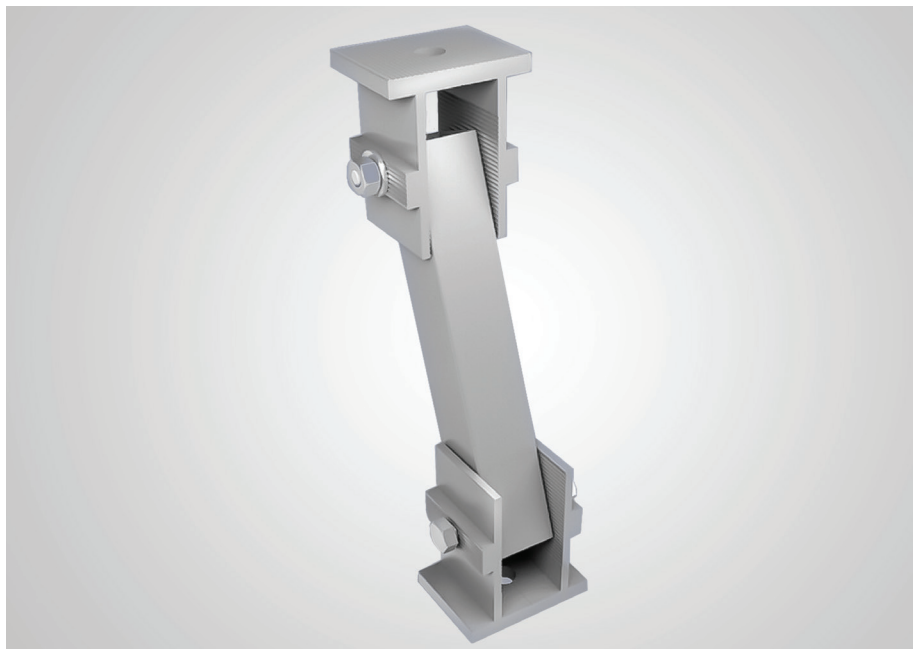


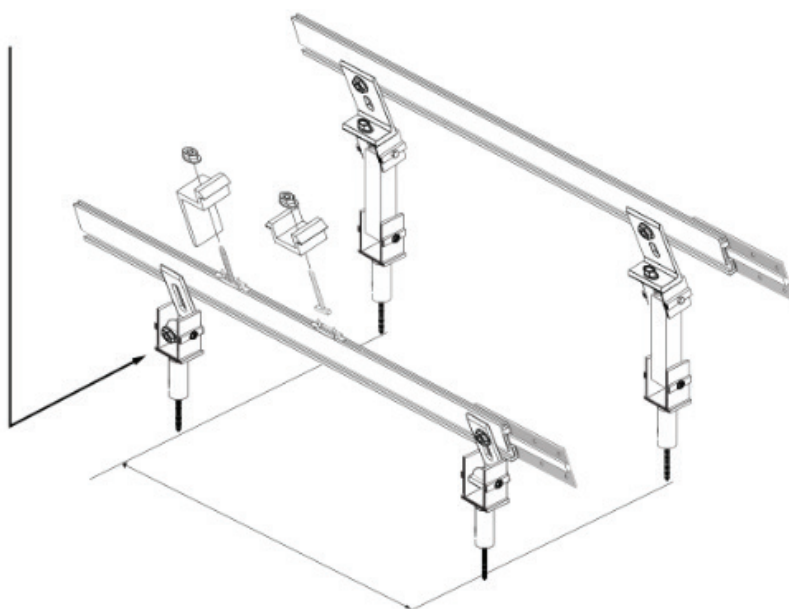
Adjustable Tilt Rear Leg

Front legs can adjust
your tilt to 10-60 degrees.
Works easily with our
system.



Rear leg with front leg used for tilting solar arrays on flat roofs

Part No.: **GR-AT-RL**
Weight (lbs): **0.31**
Dim (in): **2 x 1.5 x 2**
Materials Used: **6005 T5 Aluminum**



QRC CODE
HERE