

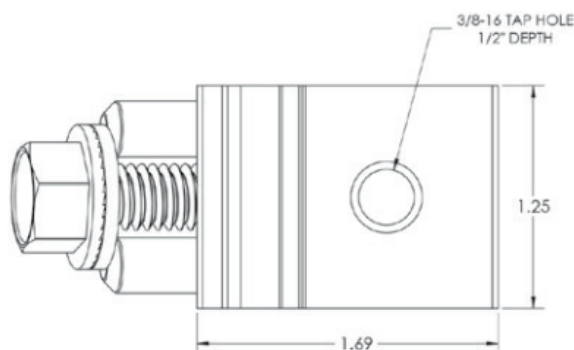
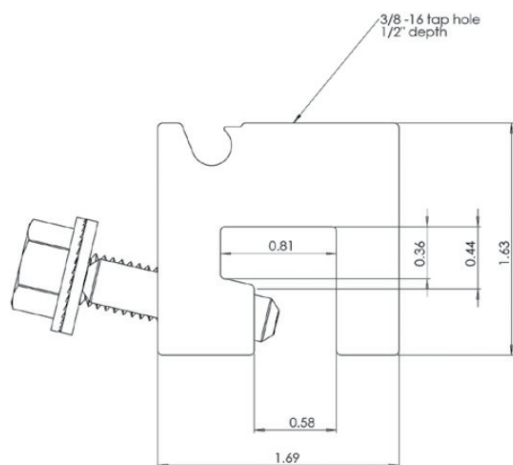
A2 Standing Seam Clamp

Our T Bolt (edit later) is the support component for the Gripac Standard Rail. It is commonly used as part of the Gripac Flashing Kit for composition shingle roof.



A2 Standing Seam Clamp, designed to not penetrate or damage panels

Part No.: **GR-SSC-A2**
Weight (lbs): **0.447**
Dim (in): **1.69 x 1.63 x 1.25**
Materials Used: **6061 T6 Aluminum**
300 Series Stainless Steel



QR CODE
HERE