

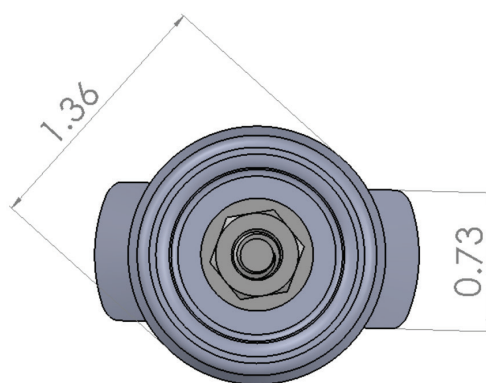
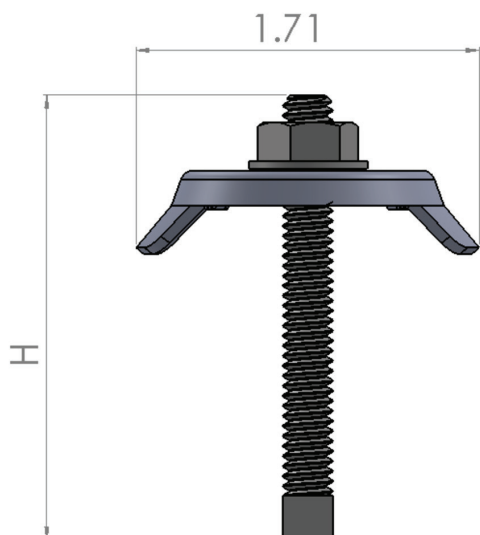
Grip Mid-Clamp

Our Mid Clamps not only mount two adjacent modules, but also have integrated grounding from both modules to the rails.



Preassembled midclamp used to clamp onto solar panels inside solar array. Made to clamp modules between 30 - 50 mm.
XX can be 3035,3546 or 4550

Part No.: **GR-MC-GSP-XX-BLK**
Weight (lbs): **0.447**
Dim (in): **1.69 x 1.63 x 1.25**
Materials Used: **6001 T6 Aluminum**
300 Series Stainless Steel



QRC CODE
HERE