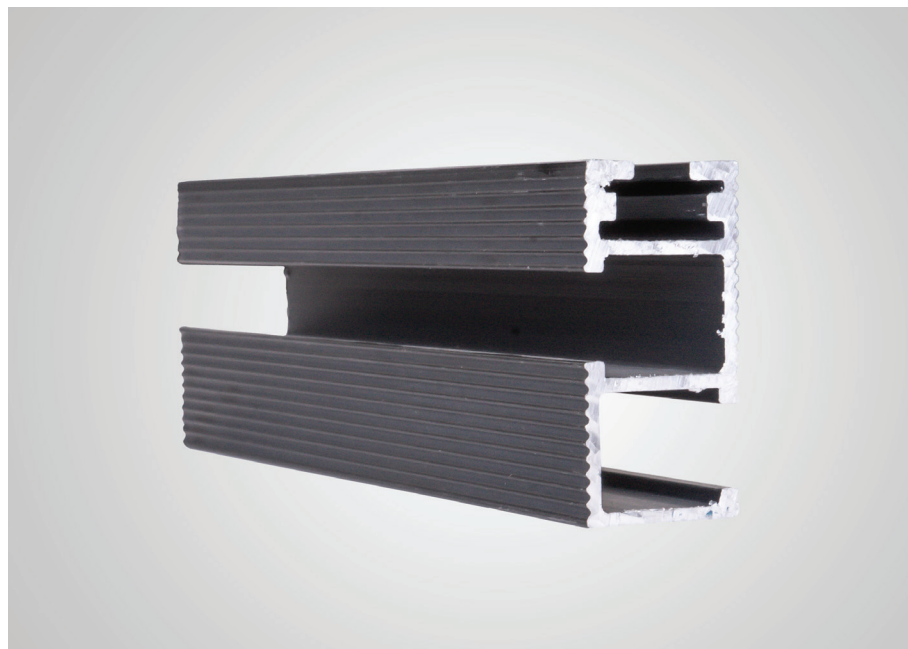


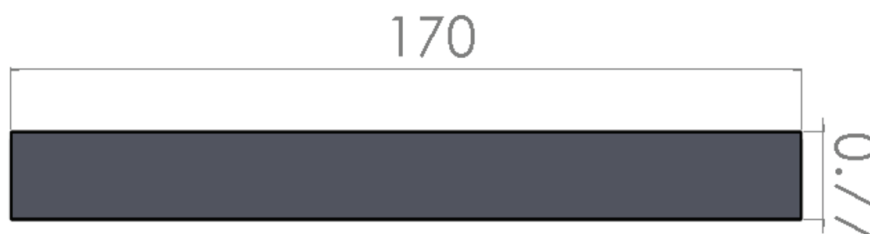
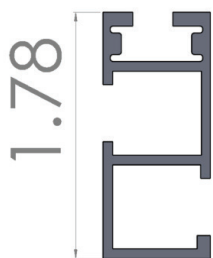
# GripRail

Made from 6005  
Aluminum, GripRail  
Standard Rails are the  
backbone of the system.  
Available finishes: Black.  
Available sizes: 170"



Main structure of the solar array. light weight 170 in GripRail with black anodized finish used to house Mid and End Clamps

Part No.: **GR-R-STD-170-BLK**  
Weight (lbs): **10.02**  
Dim (in): **170 x 1.78 x 0.830**  
Materials Used: **6065 T5 Aluminum**



QRC CODE  
HERE